



TRUCK - 51  
6204 S. Green St (ENGLEWOOD)  
1949 FWD 85 FT WD



TRUCK - 52  
3004 W. 42 ND St (BRIGHTON PARK)  
1942 MACK tot-1928 SEAGRAVE 85 FT



TRUCK - 53  
2325 N. Natchez Ave (MONTCLARE)  
1954 FWD 85 FT WD



TRUCK - 54  
5837 S. Central Ave (MIDWAY AIRPORT)  
1950 AVLBLE tot-1928 SEAGRAVE 75 FT



TRUCK - 55  
6028 Avondale Ave (NORWOOD PARK)  
1955 FWD 85 FT WD



TRUCK - 56  
3947 Petersen Ave (SAUGANASH)  
1942 MACK-tot-1925 CFD CST



TRUCK - 58  
4913 Belmont Avenue (BELPARK)  
1955 FWD 85 FT WD



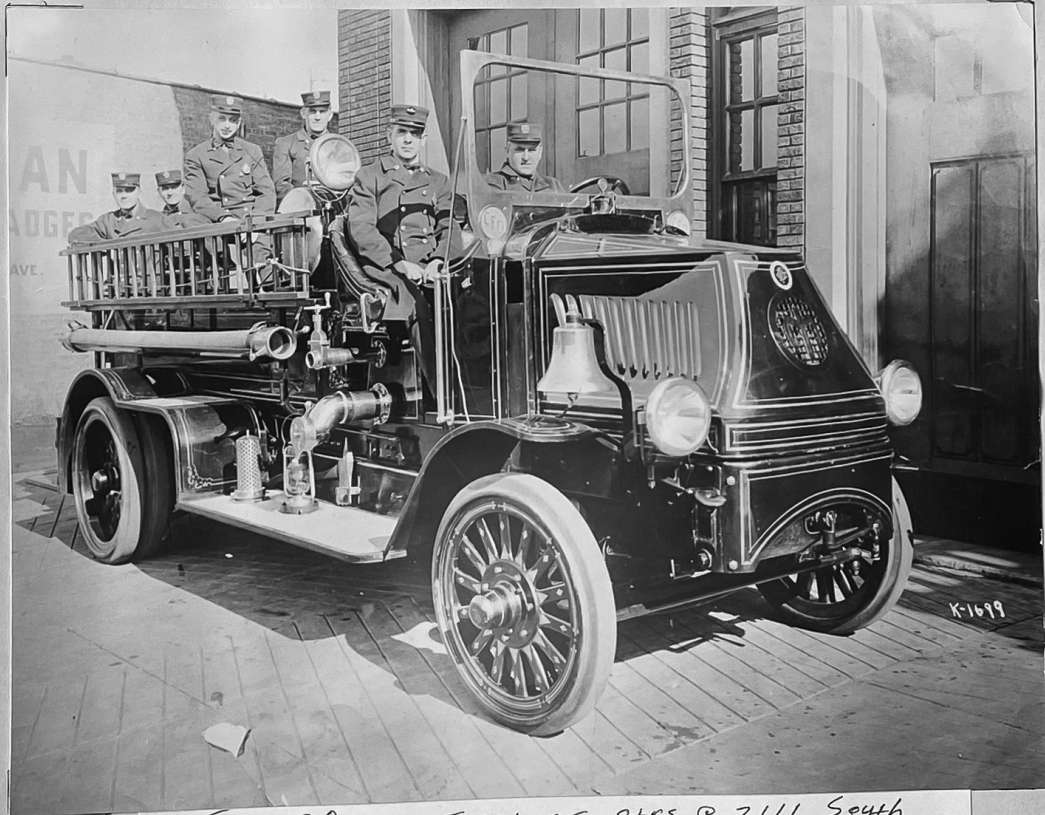
TRUCK - 59  
8022 S. Kedzie Ave (SCOTSDALE)  
1949 FWD 85 FT WD



TRUCK - 60  
5559 S. Narragansette (GARFIELD RGE)  
1955 FWD 85 FT WD



TRUCK - 61  
10458 Hoxie Ave (CALUMET HARBOR)  
1955 FWD 85 FT WD



Eng-38, in front of qtrs. @ 2111 South  
Hamlin avenue. On the back step; —  
John Lennon & Charles Sup. On Deck Seat; —  
Clarence Moore & Frank Danosky, then in  
the front seat are; Lt. Frank Roach & Engr.-  
Edward Mand. Photo taken about 1917-18