

IMPROVEMENTS



HIGH PRESSURE No. 1  
1956 International  
(E 21)



HIGH PRESSURE No. 2  
1956 International  
(E 21)



HIGH PRESSURE No. 3  
1956 International



HIGH PRESSURE No. 4  
1956 International



HIGH PRESSURE No. 6  
1956 International  
(E 21)



HIGH PRESSURE No. 7  
1948 MACK Special Unit  
INTERNATIONAL



CARDUX UNIT No. 1  
(MIDWAY AIRPORT)  
1949 AUTOCAR  
Continental Motor  
4500 lbs "snow" under  
300# CO<sub>2</sub> Pressure  
230 Gals of FOAM



PRESSURE FOG No. 3  
1962 International  
600# at tip-DARLEY  
(E 21)



PRESSURE FOG No. 4  
1962 INTERNATIONAL



LITE UNIT No. 1  
1956 International



LITE UNIT No. 2  
1956 International



RESV-GAS & OIL UNIT  
1950 FORD TANKER  
1950 FORD



GAS & OIL UNIT No. 1  
1959 International



JEEP PRESSURE No. 1  
1958 Willies Jeep



BOOSTER CO. No. 1  
1960 Willies Jeep  
600# at tip-J.BEAN



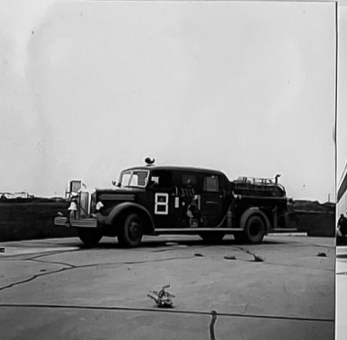
LITE UNIT No. 4  
1961 Willies Jeep



SMOKE EJECTOR No. 1  
1961 International



JEEP CHEMICAL No. 1  
Willies Jeep(O'HARE) CD



CHEMICAL No. 3  
O'HARE INT AIRPORT  
4 Beds-5 length 1 1/2"  
1000 Gals Water(GPM)  
100 Gals Refrig FOAM  
1948 MACK Locomotive Cab



CARDUX No. 3  
1955 Ford - 4000# CO<sub>2</sub>  
2-100 Ft Reels 650# PSI EA  
Beem packs - 1250# EA



CARDUX No. 2  
1944 Sterling-6000# CO<sub>2</sub>  
500 Gals pre-mixed FOAM  
2-beds 100 EA for FOAM 1 1/2"



AIRPORT TANKER No. 1  
1946 MACK tract-5500 Gals Wtr  
800 Ft 2 1/2" - 400 Ft 1 1/2"  
Also Port 500 GPM pump



PRESSURE FOG No. 2  
1962 International